

# NEW KITCHEN IDEAS

FREESTANDING / SOLID OAK / BESPOKE / FITTED / PAINTED



The  
**Freestanding**  
KITCHEN COMPANY

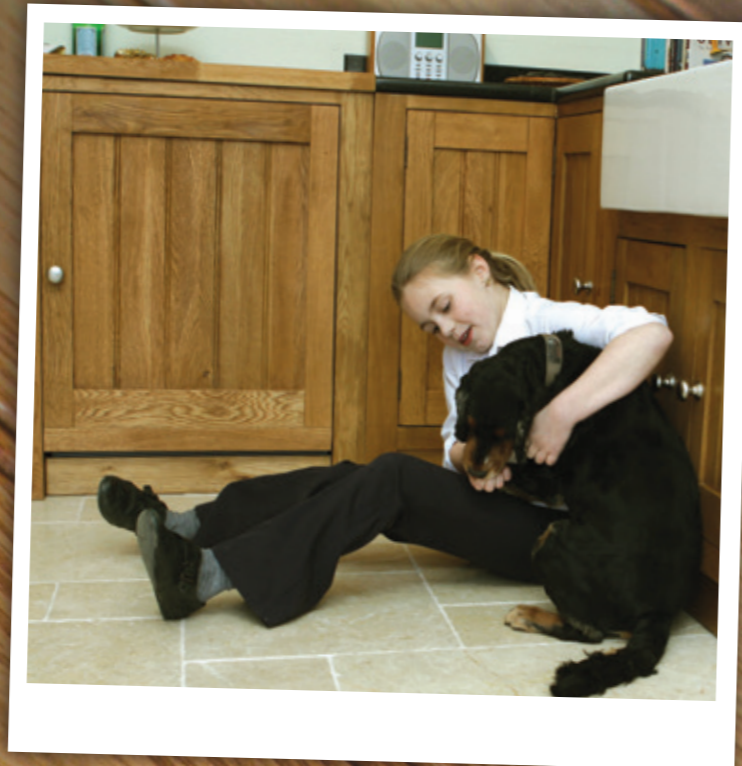
[www.TheFreeStandingKitchen.com](http://www.TheFreeStandingKitchen.com)



# THE HEART OF THE HOME

It's where you entertain, make gingerbread men with the children, perhaps do the crossword and of course create culinary delights for all the family! However you use your kitchen, enjoy it! Make it the heart of the home. You could say it's where you spend most of your time, so why have a room that's clinical and soulless? Make it a tactile, warm and enjoyable area that delights you each and every time.

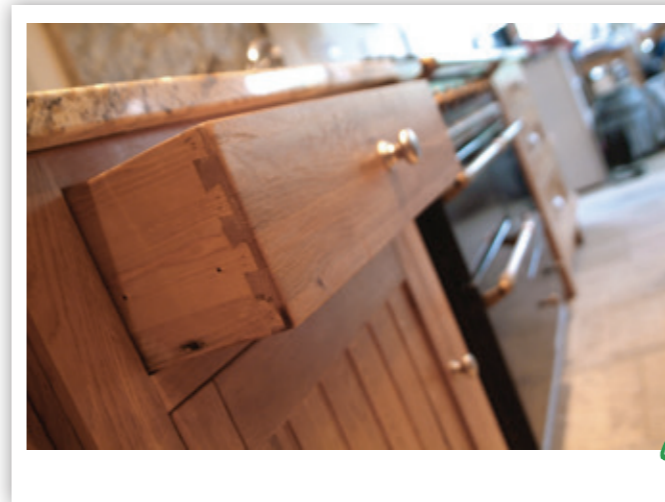
This range exceeds all these expectations providing both the tactile, characterful benefits you can only get from solid oak. It's the real deal character grade oak combined with traditional craftsmanship at a very affordable price.



# HOW IT'S MADE

All our cabinets are made from a solid character oak with reclaimed pine (usually used in the bases and drawers). Even the painted cabinets are solid oak and therefore retain the benefits making it a real eye catcher! We use a light stain and lacquer and then finish the

cabinet with a furniture wax, which ensures they will retain their charm for years, all you need to do is give them a wipe now and again! They work equally well in a fitted run or as a traditional freestanding kitchen. Simply place, level and fit the worktop. What could be easier?



Dovetail joints as standard with us, along with solid timber bases. Guaranteed to last! Upgrade to soft closers for that final touch of luxury, hidden under the drawer box, we only use the finest quality mechanisms available.



Solid 40mm thick Iroko or oak work top will create a great look and last for years. The draining grooves shown here are a great feature and certainly add the final touch.



Fully designed to accommodate any integrated or freestanding appliance. From a coffee machine to integrated fridge or freestanding dishwasher, we have it covered.



All handles ready attached, standard handles shown, please ask for your preference. All plinths, kick boards and cornice already attached. No need for end panels as the cabinets are fully assembled when delivered.

OUR RANGE →

# BASE UNITS

CODE: 101

## Cabinet £450

Great size cupboard with good size drawer above.

Single base unit with 1 drawer, 1 door and shelf.  
Left hand hinged (101L)  
Right hand hinged (101R)

Size: 740 wide 650 deep 870 high



CODE: 102

## Cabinet £495

Single base unit 1 door. Plus a wine rack to take 5 wine bottles, which can be taken out to make a tray space.  
Left hand hinged (102L)  
Right hand hinged (102R)

Size: 920 wide 650 deep 870 high



ANY QUESTIONS?  
PLEASE CALL  
0844 8009808

CODE: 103

## Cabinet £475

Single base drawer unit with 1 standard drawer and 2 larger pan drawers.

Size: 740 wide 650 deep 870 high



CODE: 104

## Cabinet £1025

This sideboard will take two appliances, most freestanding or integrated, one either side of a stack of drawers. You can have shelves and a base fitted into either or both sides at an extra cost of £90 per side.

Size: 2105 wide 650 deep 870 high



CODE: 105

## Cabinet £1075

This sink unit is designed to take an appliance either side of the sink, most freestanding or integrated. The drawers are false drawer fronts. Alternatively you can have shelves fitted into either or both sides at an extra cost of £90 per side.

Size: 2105 wide 650 deep 870 high



CODE: 106

## Cabinet £1125

This sink unit takes a 600mm standard butlers sink, with 2 standard drawers and 4 pan drawers.

Size: 2105 wide 650 deep 870 high



CODE: 107

## Cabinet £725

This small sink unit takes a standard butlers sink. It also has two working drawers and 3 generous cupboards.

Size: 1340 wide 650 deep 870 high



CODE: 108

## Cabinet £750

Our cabinet for a drop in sink, it takes a standard 1000mm sink with either 1 or 1.5 bowls. The large top drawer is false to allow for plumbing, but there are 3 deep drawers on the right.

Size: 1340 wide 650 deep 870 high



**CODE: 109**

### Cabinet £350

Special base unit to take a single floor mounted appliance. Most integrated or freestanding, it will fit both. The door is supplied loose for ease of fitting.

Size: 740 wide 650 deep 870 high



**CODE: 113**

### Cabinet £725

This cabinet takes an oven and hob with cupboards and drawers either side. An option is to have a back and breakfast bar fitted to the back and use as an island. Just ask. This will take a single or double oven.

Size: 1340 wide 650 deep 870 high



**CODE: 115/L and 115/R**

### Single Cabinet £350

A very useful little unit which looks great each side of a cooker or is small enough to fit into little spaces.

Size: 450 wide 650 deep 870 high



**CODE: 119**

### Cabinet £650

This is a blind corner cabinet allowing any other cabinets to join, making a return run. Can be used as a left or right by removing the knob and hinge.

Size: 1200 wide 650 deep 870 high



**CODE: 120**

### Cabinet £725

Due to popular demand we have made a unit to take a double butlers sink, then you can add other units to each side i.e. the 101, 102 or 109.

Size: 940 wide 650 deep 870 high



**CODE: 122**

### Cabinet £725

L-shaped corner cabinet with bifold doors, great cabinet to provide lots of storage which fully utilises all the corner.

Please ask about worktop options for this cabinet.

Size: 1050 wide 1050 deep 870 high



**CODE: 123**

### Cabinet £625

A great pan drawer cabinet! Two deep and wide drawers for all those larger pots and pans. Soft closing these drawers is a good option to consider if you have lots of heavy pans!

Size: 940 wide 650 deep 870 high



# TALL UNITS

We can alter any of those to fit any integrated appliance. Please ask for details.

**CODE: 201**

**£795**

Tall cupboard to take a double oven, the top door lifts up. This unit will butt up to another tall unit. The internal height is 880mm and takes an in-column double oven.

Size: 700 wide 620 deep 2100 high



**CODE: 205**

**£795**

Another tall housing with tons of storage space. This one takes an integrated coffee machine or other small machine. The aperture is 450mm high.

Size: 700 wide 620 deep 2100 high



**CODE: 204**

**£995**

This is our larder with multiple storage options. The baskets below are deep and long. Very attractive and popular cabinet.

Size: 700 wide 620 deep 2100 high



**CODE: 207**

**£795**

Tall cupboard that will take an integrated fridge/freezer with 50/50 split, if you would like advice on which fridges will fit please call. This unit will butt up to another tall unit. This cupboard can also be fitted out with a back and shelves to make a very practical storage cupboard for an extra cost of £150.

Size: 700 wide 620 deep 2100 high



**CODE: 211**

**Centre £1495**

Size: 1000 wide 620 deep 2100 high

This is a great classic larder, a must if you have the room, but if you haven't then you can just buy the centre part. It has large shelves on the back of the doors and space for 18 wine bottles. Baskets for display only.

**CODE: 213/L and 213/R**

**Companions £375**

Great addition to the centre larder, this cabinet has one drawer, 2 cupboards and shelves. Available left or right

Size: 550 wide 430 deep 1800 high

**Complete Package £2245**

Size: 2000wide 620 deep 2100 high



# ISLANDS, DRESSERS & LARDERS

CODE: 401

**With Granite £795**

This island unit has 2 drawers that open from both sides and the same for the cupboard. It also has 2 bars for towel rails and spaces for 8 wine bottles.

Size: 820 wide 580 deep 900 high



CODE: 402

**With Granite £1195**  
**Without Granite £1095**

This island has 1 large drawer and a cupboard in the centre that can be opened from both sides, 2 drawers at the ends, and 4 large baskets that can be removed to have open shelves and use the baskets elsewhere. Also available without granite.

Size: 1680 wide 620 deep 900 high

CODE: 403

**£1375**

Dresser with 5 drawers and 2 cupboards in the base with 2 glazed doors and 3 small drawers to the top. The worktop is solid oak.

Size: 1660 wide 570 deep 2130 high



CODE: 404

**£595**

This excellent square Island with 1 drawer and 2 shelves with a granite top included is perfect for a smaller kitchen, it will definitely give you that stylish look.

Size : 760 x 760 x 920



CODE: 405

**£795**

This Island with 2 drawers and 2 shelves and a wooden top makes an outstanding piece to accompany your kitchen. Giving it an elegant look whilst providing a great working area!

Size : 1200 x 600 x 920



CODE: 406

**£995**

This Island has 2 drawers and 2 cupboards below with a Granite top providing a Breakfast bar creating the cook and entertaining area! A wonderful piece to create the central hub of your kitchen.

Size : 1600 x 920 x 920



CODE: 407

**With Wooden Top £1095**  
**With Granite Top £1295**

This Oval Kitchen Island is really versatile, with a wooden or granite top and six doors, plus two additional 'pull outs' a chopping board and tray this cabinet will make a really useful cabinet in any kitchen! Please be aware this is a large cabinet so please check delivery clearance.

Size : 1220 x 920 x 920



# WALL UNITS

CODE: 304/L and 304/R

£365

Glazed wall cupboard with one door can be left or right hinged. A very roomy single cupboard.

Size: 770 wide 360 deep 875 high  
 Note: The cornice is included in the size.  
 This accounts for 50mm overhang either side.



CODE: 301/L and 301/R

£325

Wall cupboard quite deep and wide. Left or right hinged.

Size: 770 wide 360 deep 875 high  
 Note: The cornice is included in the size.  
 This accounts for 50mm overhang either side.



CODE: 305 600mm / 306 900mm / 307 Bespoke

£110 600mm £159 900mm £200 per metre

Available In our standard Oak, Limed or painted!!  
 A great addition to you kitchen and a real centre piece.

CODE: 302

£525

Wall cupboard much wider than usual. This is quite substantial so will need good fixings. It has 1 internal shelf and a partition between the cupboards.

Size: 1400 wide 360 deep 875 high



ANY QUESTIONS?  
 PLEASE CALL  
 0844 8009808



CODE: 303

£565

Wall cupboard much wider than usual. This is quite substantial so will need good fixings. It has 1 internal shelf and a partition between the cupboards and glazed doors.

Size: 1400 wide 360 deep 875 high



LIKE US ON FACEBOOK FOR SPECIAL OFFERS

# PAINTING

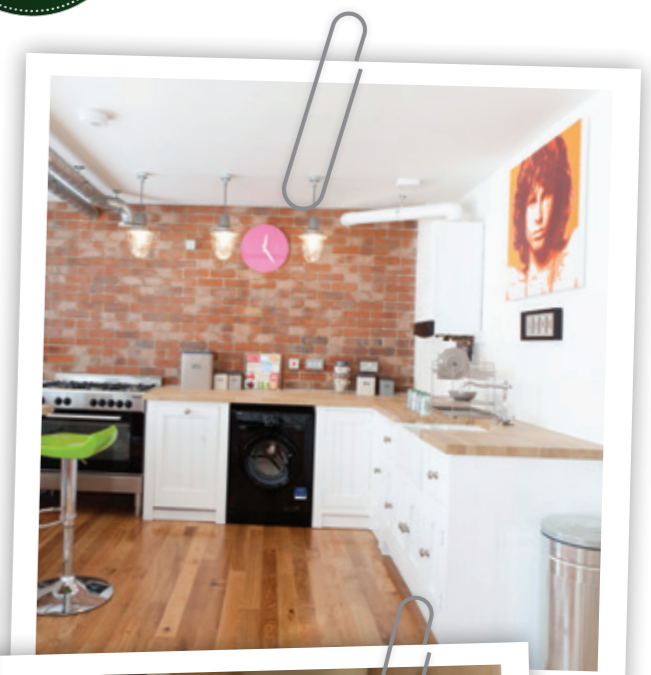
We can paint these solid oak cabinets to any colour you like! We use very high quality polyurethane paint with two coats of primer and topcoat, allowing the character and texture of the oak to remain.

Due to printing variations please do not use this as an exact colour match, it is intended as a guide only.

PAINTED FINISHES: HERITAGE WHITE, BLUE GREY & COOKING APPLE GREEN

Small cupboards	£95
Medium cupboard	£145
Large cupboard	£170
Bespoke colour	£110

Other colours available on request.



Cooking Apple Green



Our standard colour Heritage White



Blue-Grey

## GRANITE WORKTOP

Our Granite is a lovely black with little grey/white speckles at 40mm thick and is available in up to 2.1metre lengths either with a single butler sink cut out or as a blank to span more than one cabinet! We have granites ready made for all individual cabinets if required with a bullnose detail to the front and sides. As with our cabinets we are able to provide an alteration service such as cutting down the length or removing the bullnosing to fit against a wall or range, but we would suggest that a granite fitter is used for making return joins and some sink/hob cut outs. Please ask us for more details!

Granite blanks (to span multiple cabinets) 2135 x 665 x 40	£320
Any 740mm wide cabinet individual top 770 x 665 x 40	£175
102 Individual top 950 x 665 x 40	£195
104/121 Individual top 2135 x 665 x 40	£320
105/106 with single butler sink 2135 665 x 40	£360
107 Individual top with single butler sink 1370 x 665 x 40	£275
108 Individual top with 1 ½ bowl sink cut out 1370 x 665 x 40	£275
113 Individual top 1340 x 665 x 40	£275
115 Individual top 470 x 665 x 40	£120
119 Individual top 1220 x 665 x 40	£250
120 Individual top for a double butler sink 970 x 665 x 40	£250
122 Individual top 1050 x 1050 x 40	£270
Granite re-finishing service (per item)	£60
Draining grooves per side	£220
Granite up-stand 2110 x 100 x 20 per length	£95



## TIMBER WORKTOP

At the Freestanding Kitchen Company we love timber worktops and find given the right installation they will last you forever! We supply beautiful staved solid 40mm Iroko or oak worktops to a maximum length of 4 metres. Other timber tops can be supplied, however in our opinion Iroko as it has natural oil and strength to it and oak for its hardness are the best choices! Both will need several coats of worktop oil once it has been installed and then once every six months thereafter! We are able to produce the worktops with any sink or hob cut out as required, or for that really classy finish why not have draining grooves?

Oak/Iroko 40mm solid worktop 900mm	£220 per metre
Oak/Iroko 40mm solid worktop 720mm	£175 per metre
Upstand in Oak/Iroko 20mm x 100mm	£32 per metre
Draining Grooves in wood Inc. Sink cut-out	£135



## SINKS & TAPS + ACCESSORIES

Single Butlers sink	£199
Double Butlers sink	£330
Medici Ceramic 1.5 bowl drop in sink	£295
Baroc Tap available in Chrome, Nickel, Gold & Bronze	£168
Clearwater Elegance Tap in Chrome, Nickel, Gold & Bronze	£180

## ALTERATION & BESPOKE CABINETS

Whilst this range of cabinets covers most kitchens, we realise that you are an individual and therefore might need something a little more bespoke. To ensure you get exactly what you want we are able to alter any of the cabinets to your specification, be it reducing the length of a cabinet to maybe adding shelving instead of an appliance space. We have it covered, just ask! As a guide alterations fit into three price brackets of £90, £150 and £210 depending on complexity.

Whatever you need we have it covered!



## SOFT CLOSE DRAWERS & DOORS

The doors and drawers are solid timber as standard, with solid bases and solid drawer runners. These work very well, but can get a little heavy when filled with knives and forks. So to deal with this we can add drawer runners with soft close systems at an extra cost. We can also add a soft close system to the top of the door which adds a touch of class to your solid oak freestanding kitchen. With these systems added it's hard to tell if the kitchen costs £3k or £33k. Prices are £120 per drawer and £35 per door. All you have to do is ask for soft close when you order.

CODE: 762

## Expanding Drawer Insert | £30

This Judge expanding wooden drawer set maximises and organises space with 5-7 handy compartments. The 370mm deep tray extends from 312mm to 485mm wide.





## LIMED OAK

Due to popular demand, our cabinetry is now available in a limed oak finish as well as our standard oak. Limestone is ground down to a paste and applied to the furniture to create a lighter wash over the timber. The cost is the same as our standard oak range. For details of alternate finishes please refer to our "Painting" section.



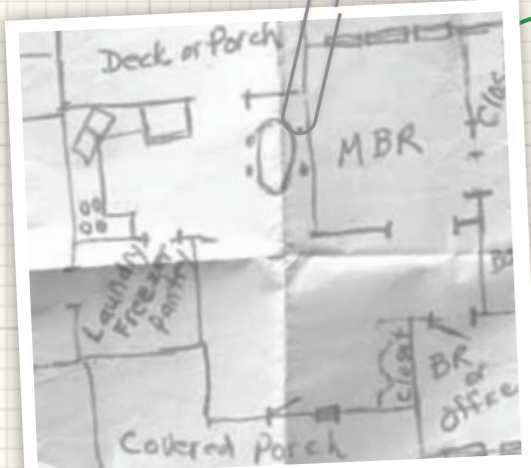
## SMEG APPLIANCES



	CODE	PRICE
Dish washer int SMEG DIC6-1	701	£340.00
Washing machine int SMEG WMI12C7	703	£475.00
Washer dryer int SMEG WDI12C6-1	704	£395.00
Under larder fridge int SMEG LF1700PC	713	£350.00
Under freezer int SMEG FR1650PC	714	£370.00
Single oven int SMEG SF390X	715	£525.00
Double oven int SMEG DUSC36X	718	£825.00
Fridge freezer int SMEG CR5050AP 50-50	719	£650.00

Other Smeg appliances are available.

# HOW WE DESIGN FOR YOU



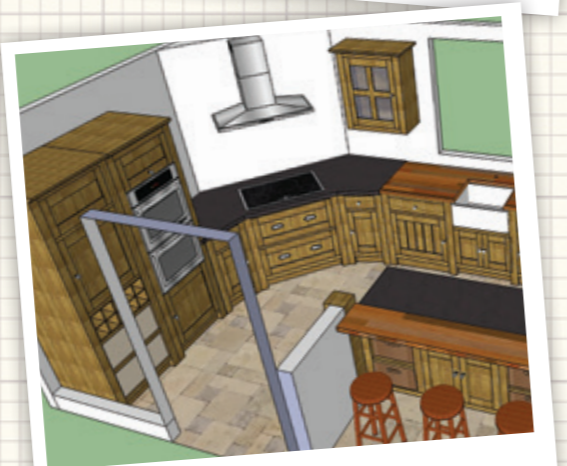
1. Send us the dimensions of your Kitchen



2. We will send back a great design and an unbeatable quote! (free to you)



3. We will then organise an online meeting to finalise the design (free to you)



4. During the meetings, you can change the design and ask any questions (free to you)



5. Once it is designed perfectly, you are welcome to place your deposit if you wish!



**SCAN TO USE OUR KITCHEN PLANNER**  
Use grid and cut-outs to plan your kitchen using our Freestanding Furniture



# NEW KITCHEN IDEAS

FREESTANDING / SOLID OAK / BESPOKE / FITTED / PAINTED



- > **SOLID OAK CABINETS**
- > **WOODEN WORKTOPS**
- > **FULLY ASSEMBLED**
- > **COST EFFECTIVE**
- > **NO CHIPBOARD**
- > **PAINTING AVAILABLE**
- > **GRANITE WORKTOPS**
- > **NO MDF**
- > **ACCESSORIES & APPLIANCES**



**SCAN TO FIND A  
SHOWROOM NEAR YOU**

**CONTACT US** Call us now 0844 8009808 | Email: [info@thefreestandingkitchen.com](mailto:info@thefreestandingkitchen.com)  
[www.thefreestandingkitchen.com](http://www.thefreestandingkitchen.com) | Please see website for showroom locations  
**Got a question?** Send a plan for FREE design.



Follow us on Twitter: [@FSkitchens](https://twitter.com/FSkitchens)  
Find us on Facebook: [The Freestanding Kitchen Company](https://www.facebook.com/TheFreestandingKitchenCompany)  
Connect with us on LinkedIn: [The Freestanding Kitchen Company](https://www.linkedin.com/company/TheFreestandingKitchenCompany)  
Follow us on Pinterest: [The Freestanding Kitchen Company](https://www.pinterest.com/TheFreestandingKitchenCompany)

